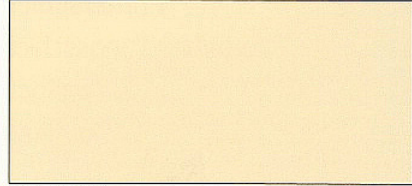


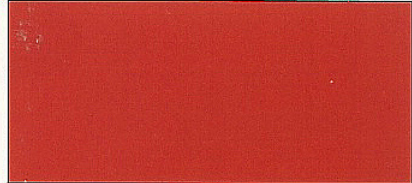
RAL 1002 Sandgelb



RAL 1015 Hellelfenbein



RAL 1021 Rapsgebl



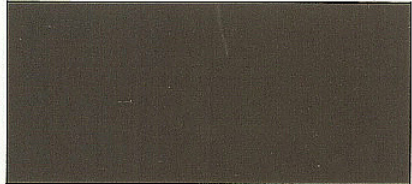
RAL 3000 Feuerrot



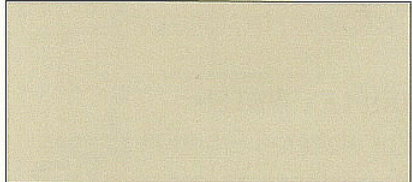
RAL 3009 Oxidrot



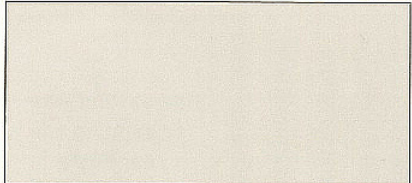
RAL 6011 Resedagrün



RAL 7016 Anthrazitgrau



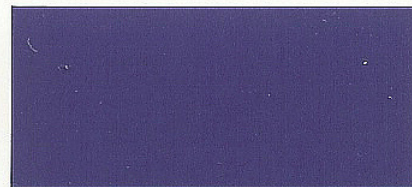
RAL 7032 Kieselgrau



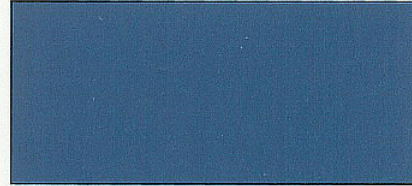
RAL 7035 Lichtgrau



RAL 8014 Sepiabraun



RAL 5002 Ultramarinblau



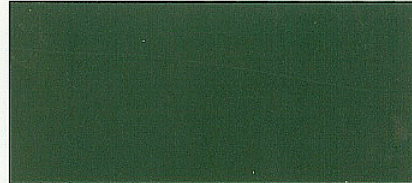
RAL 5009 Azurblau



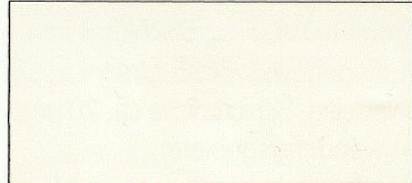
RAL 5010 Enzianblau



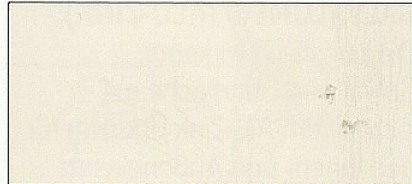
RAL 5012 Lichtblau



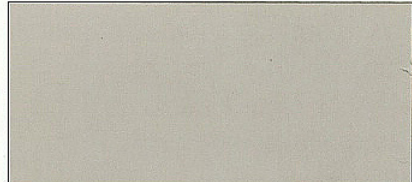
RAL 6005 Moosgrün



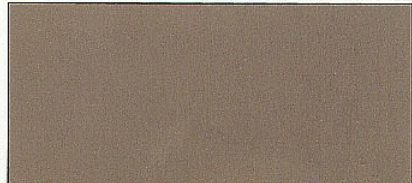
RAL 9001 Cremeweiß



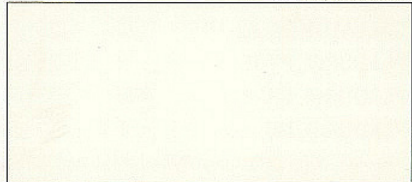
RAL 9002 Grauweiß



RAL 9006 Weißaluminium



RAL 9007 Graualuminium



RAL 9010 Reinweiß

Änderungen vorbehalten

Die Farbtonekarte wurde mit größter Sorgfalt gedruckt. Trotzdem kann es zu Abweichungen von den Farbtönen der vorlackierten Bleche kommen.